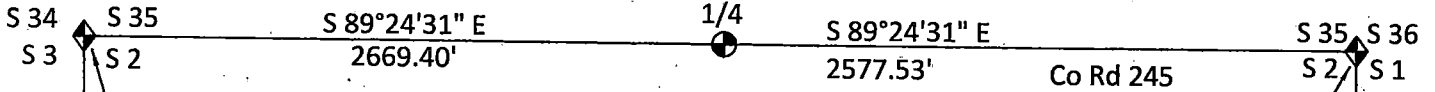




RECP #: 813335

RECORDED 6/24/2021 AT 1:38 PM BK# 2741 PG# 2529
Debra K. Lee, CLERK OF LARAMIE COUNTY, WY PAGE 2 OF 2

T 20 N, R 67 W
Platte County, Wyoming



T 19 N, R 67 W
Laramie County, Wyoming

Found as per CR filed in Book 1443 at Page 937 on 2/7/1997 in the LCCO by Jeffrey Jones - I did not find the PK nails

Found as per CR filed in Book 2513 at Page 1365 on 8/23/2016 in the LCCO by Andrew Minton

Notes:

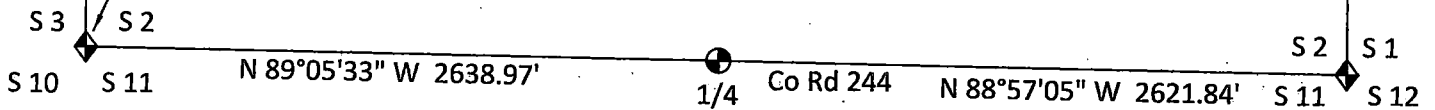
CR = Corner Recordation

LCCO = Laramie County Clerk's Office
P.O Box 608
309 West 29th Street
Cheyenne, Wyoming 82003
(307) 633-4350

N 00°28'48\" W 5282.10'

S 00°01'31\" W 5316.92'

Found as per CR filed in Book 2244 at Page 1726 on 11/10/2011 in the LCCO by Daniel Siek



0' 200' 400' 800'

Scale
1" = 800'